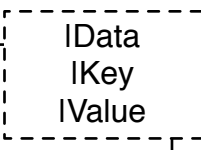
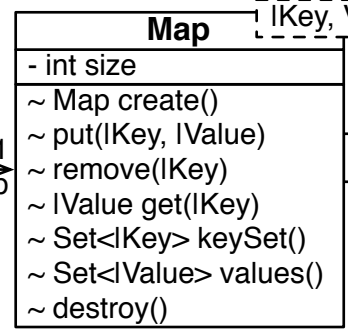
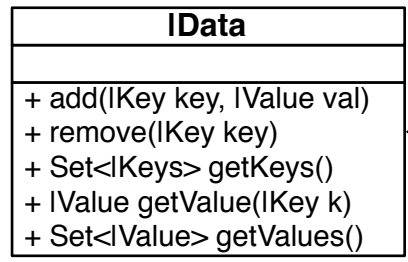


aspect Map

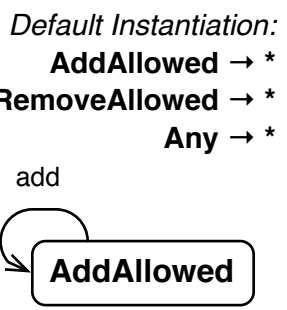
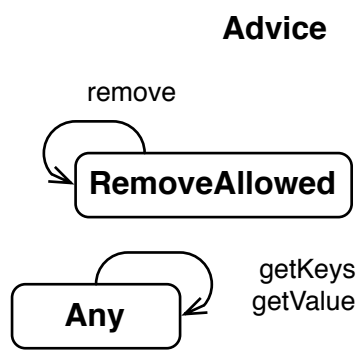
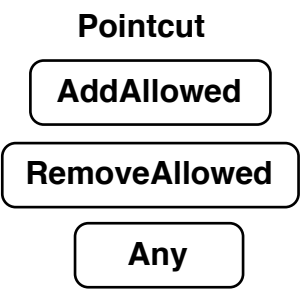
structural view



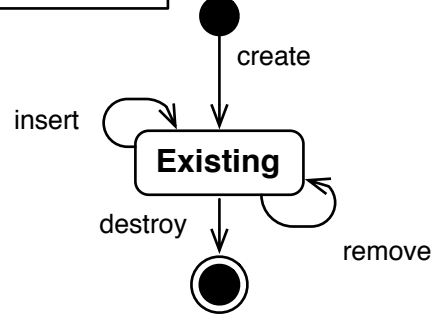
Implementation:
Map:

java.util.HashMap

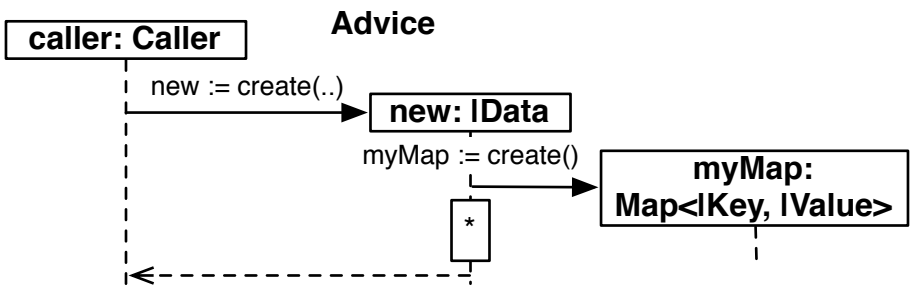
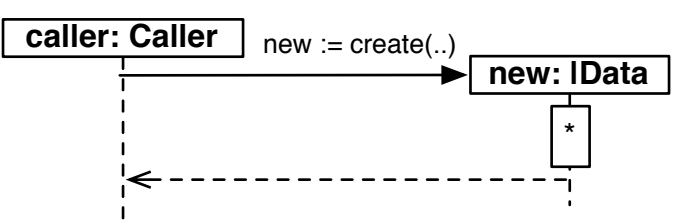
state view IData



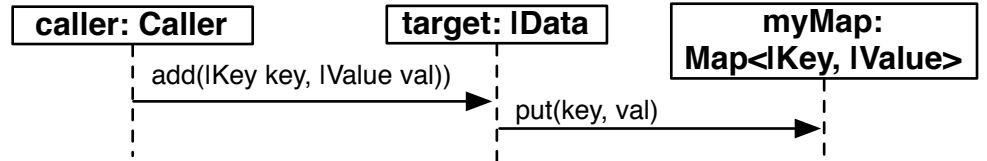
state view Map



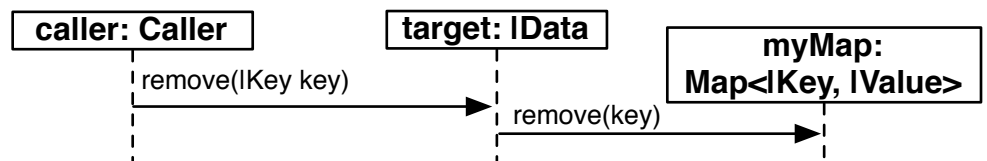
message view initializeAssociation



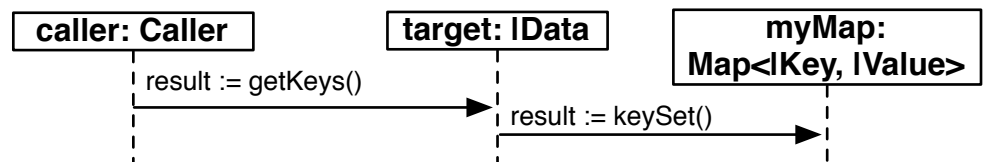
message view add



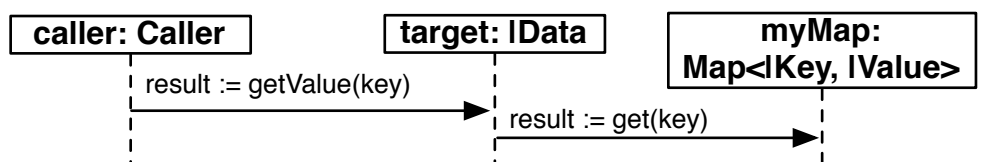
message view remove



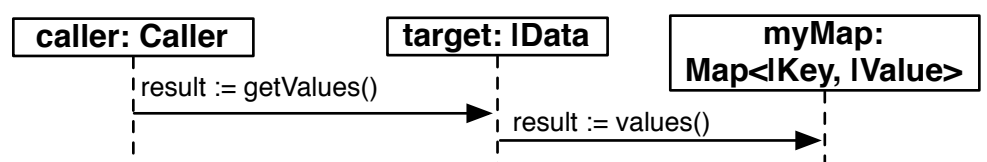
message view getKeys



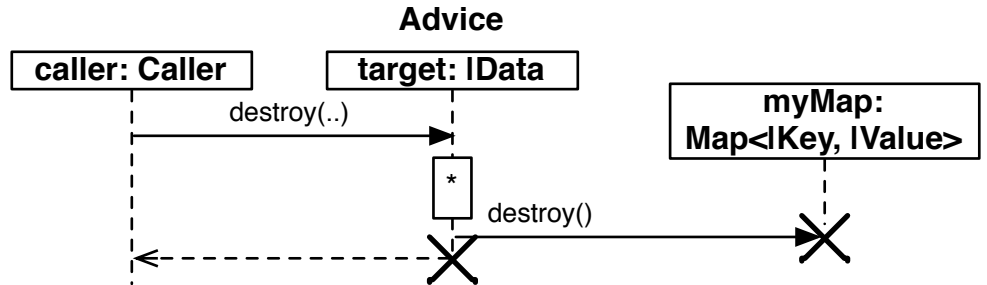
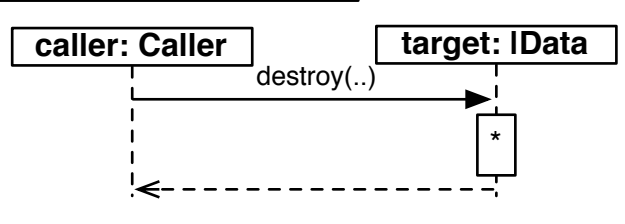
message view getValue



message view getValues

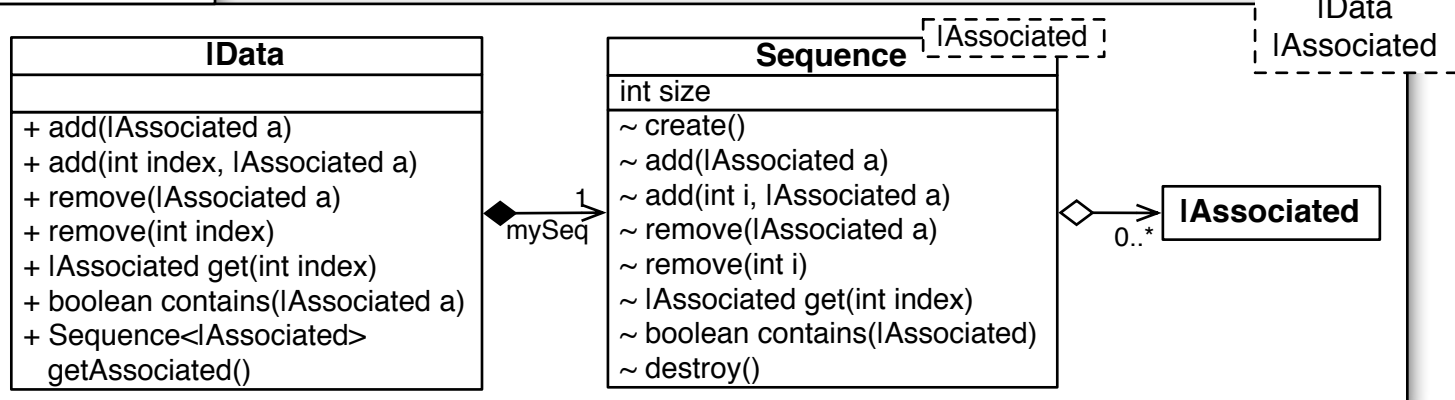


message view cleanup



aspect ZeroToMany-Ordered

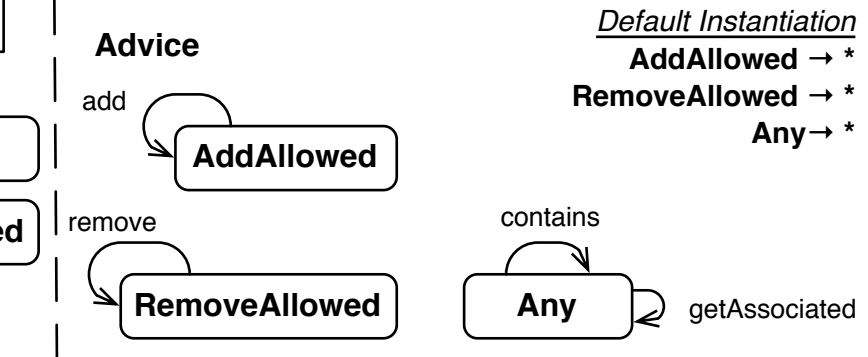
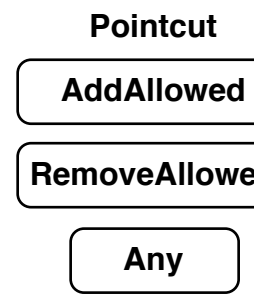
structural view



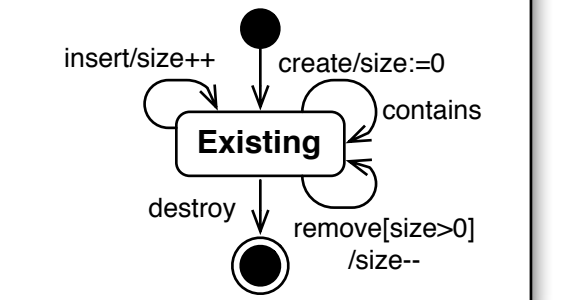
Implementation:
Sequence:

any java.util.List

state view IData

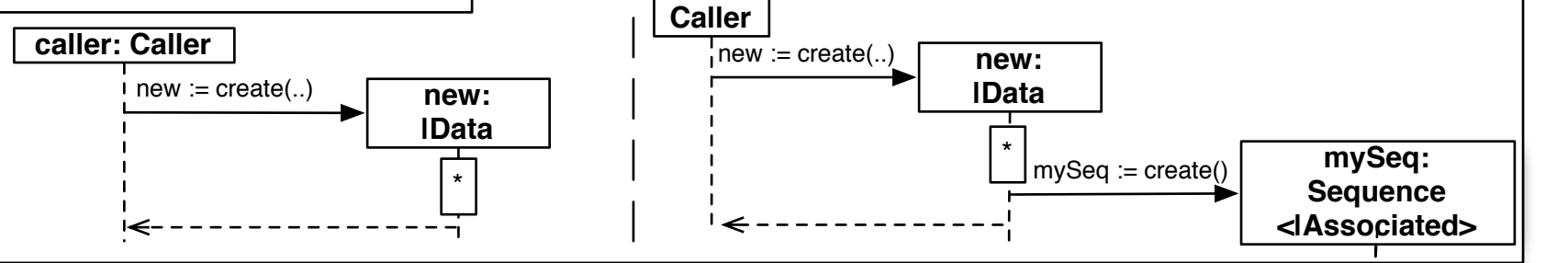


state view Sequence<IAssociated>

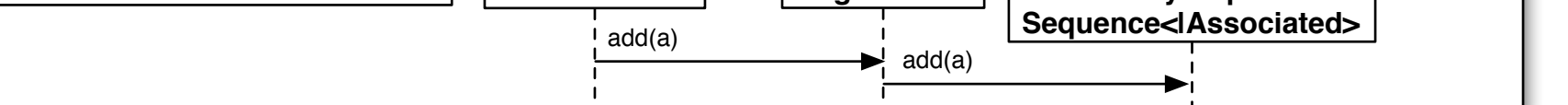


message view create affected by initializeAssociation

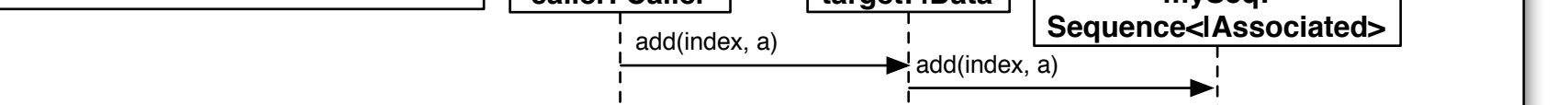
message view initializeAssociation



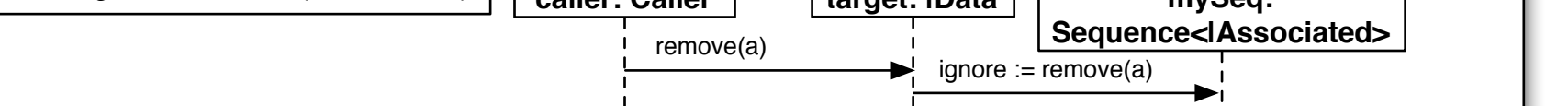
message view add(IAssociated)



message view add(int, IAssociated)



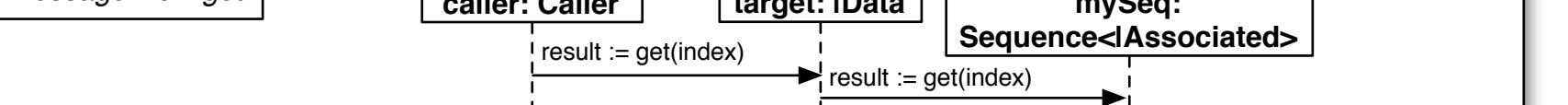
message view remove(IAssociated)



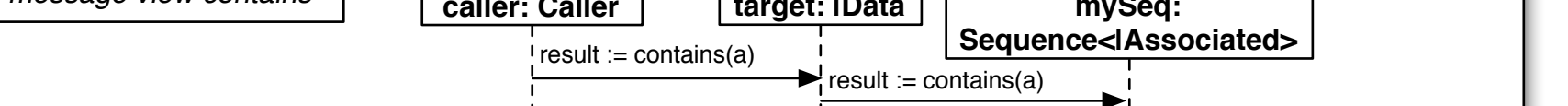
message view remove(int)



message view get



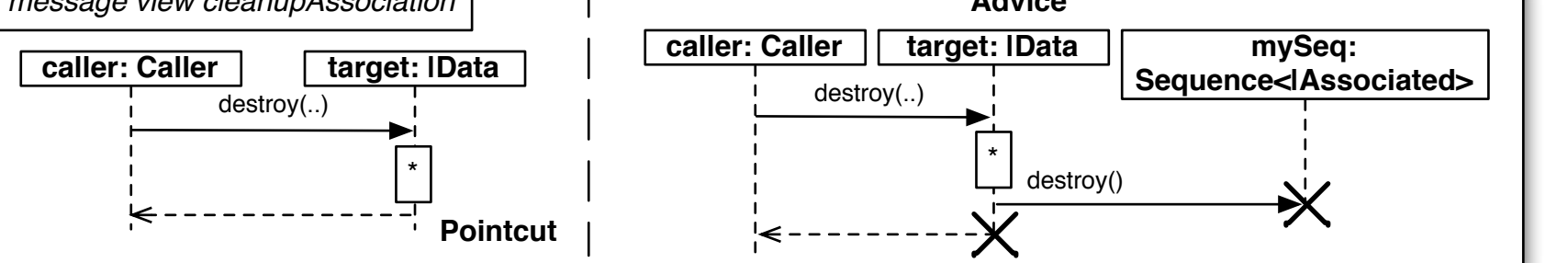
message view contains



message view getAssociated is Getter<mySeq>

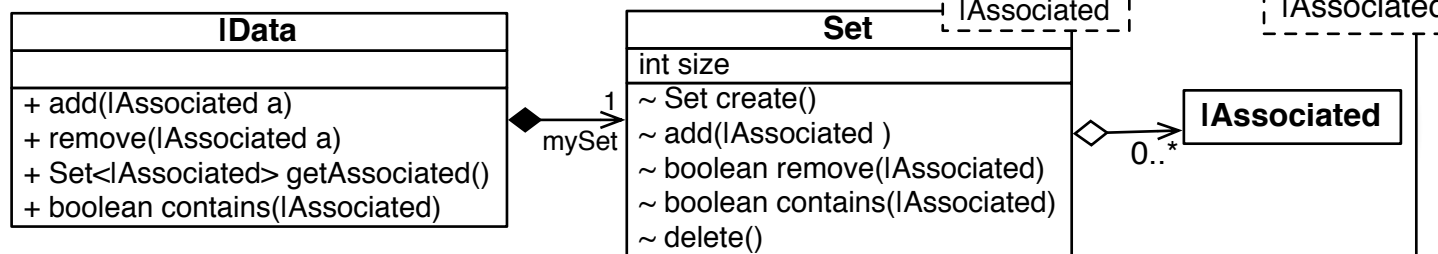
message view destroy affected by cleanupAssociation

message view cleanupAssociation



aspect ZeroToMany

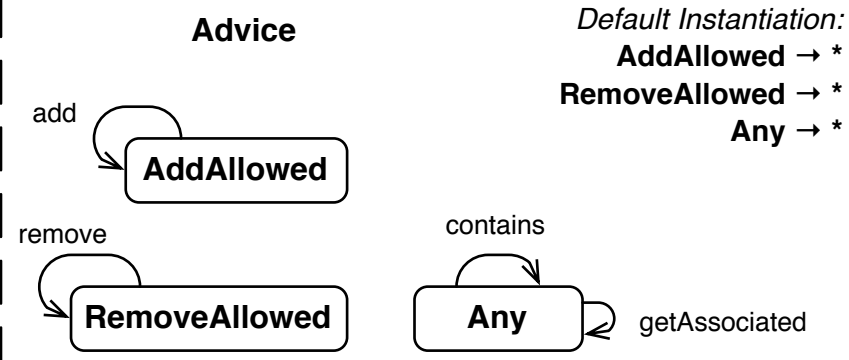
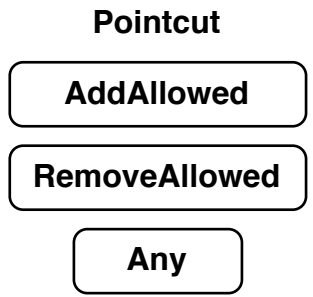
structural view



Implementation:

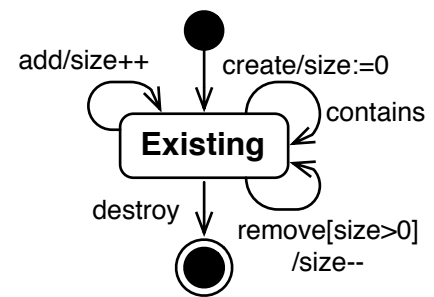
Set<IAssociated>: any java.util.Set<IAssociated>

state view IData

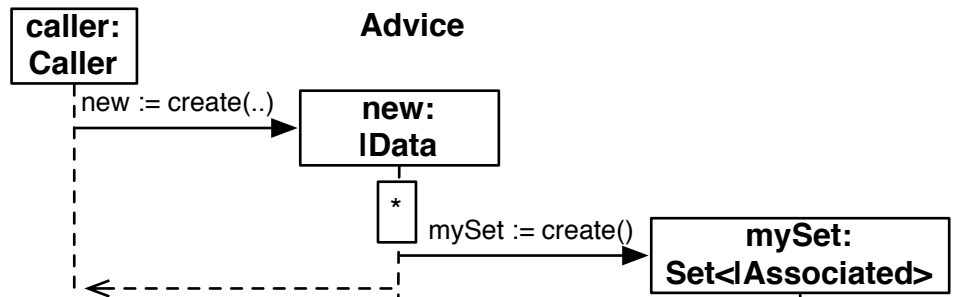
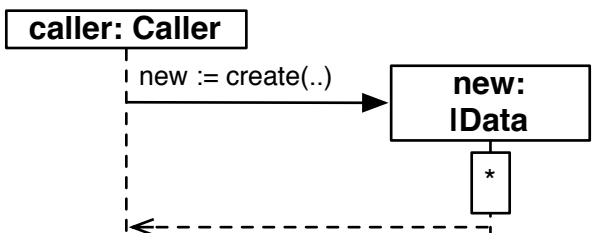


Default Instantiation:
AddAllowed → *
RemoveAllowed → *
Any → *

state view Set<IAssociated>

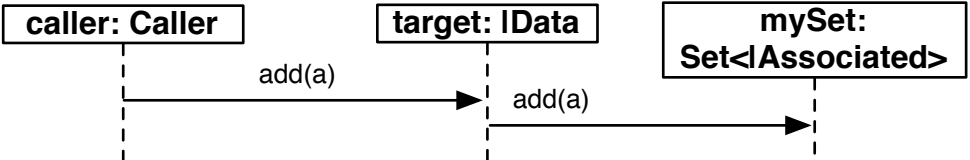


message view initializeAssociation

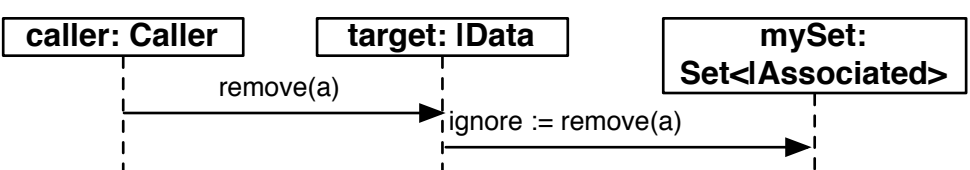


message view create affected by initializeAssociation

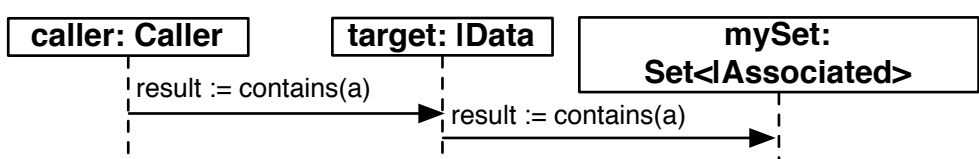
message view add



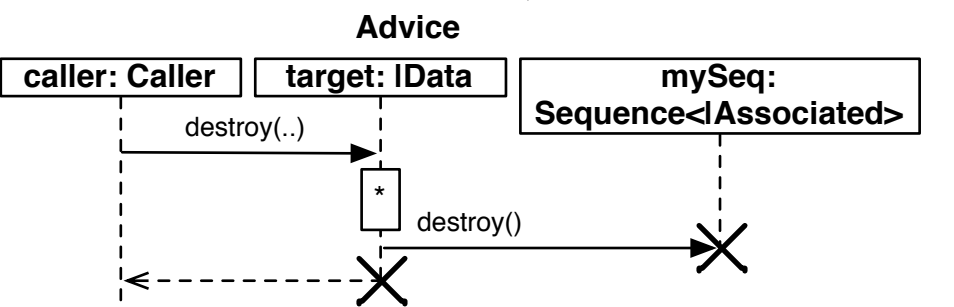
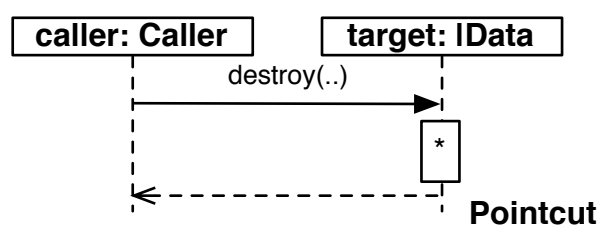
message view remove



message view contains



message view cleanupAssociation



message view destroy affected by cleanupAssociation