

TERMINAL ANSWER

- **Type Definitions**

type Character = character set of the terminal

type DisplayMode = enum {normal, inverted, underlined}

- **Input Message**

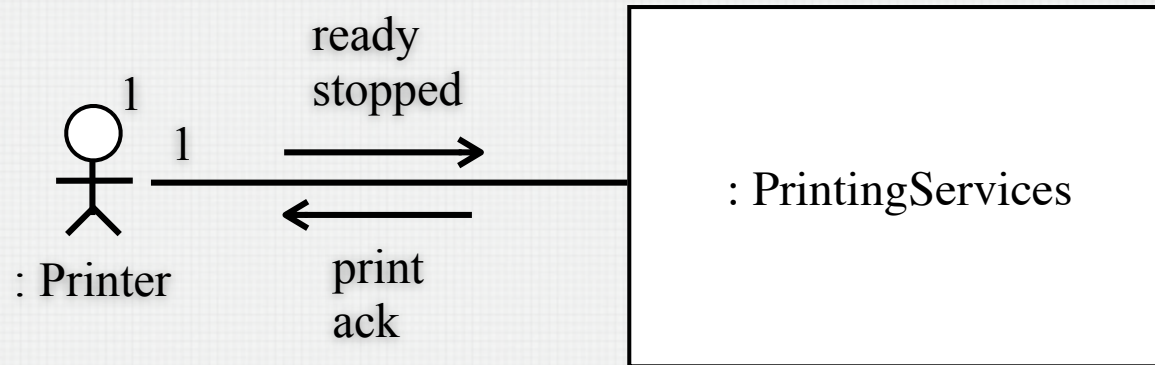
Input(c: Character)

- **Output Message**

Display(c: Character, m: DisplayMode)

<<enumeration>> DisplayMode
normal inverted underlined

PRINTER ENVIRONMENT MODEL ANSWER



PRINTER MESSAGE DECLARATIONS

- **Type Definitions**

type Directive = **enum** {cancel, retry}

type Problem =

enum {out-of-paper, paper-jam, lack-of-ink}

- **Input Messages**

Ready

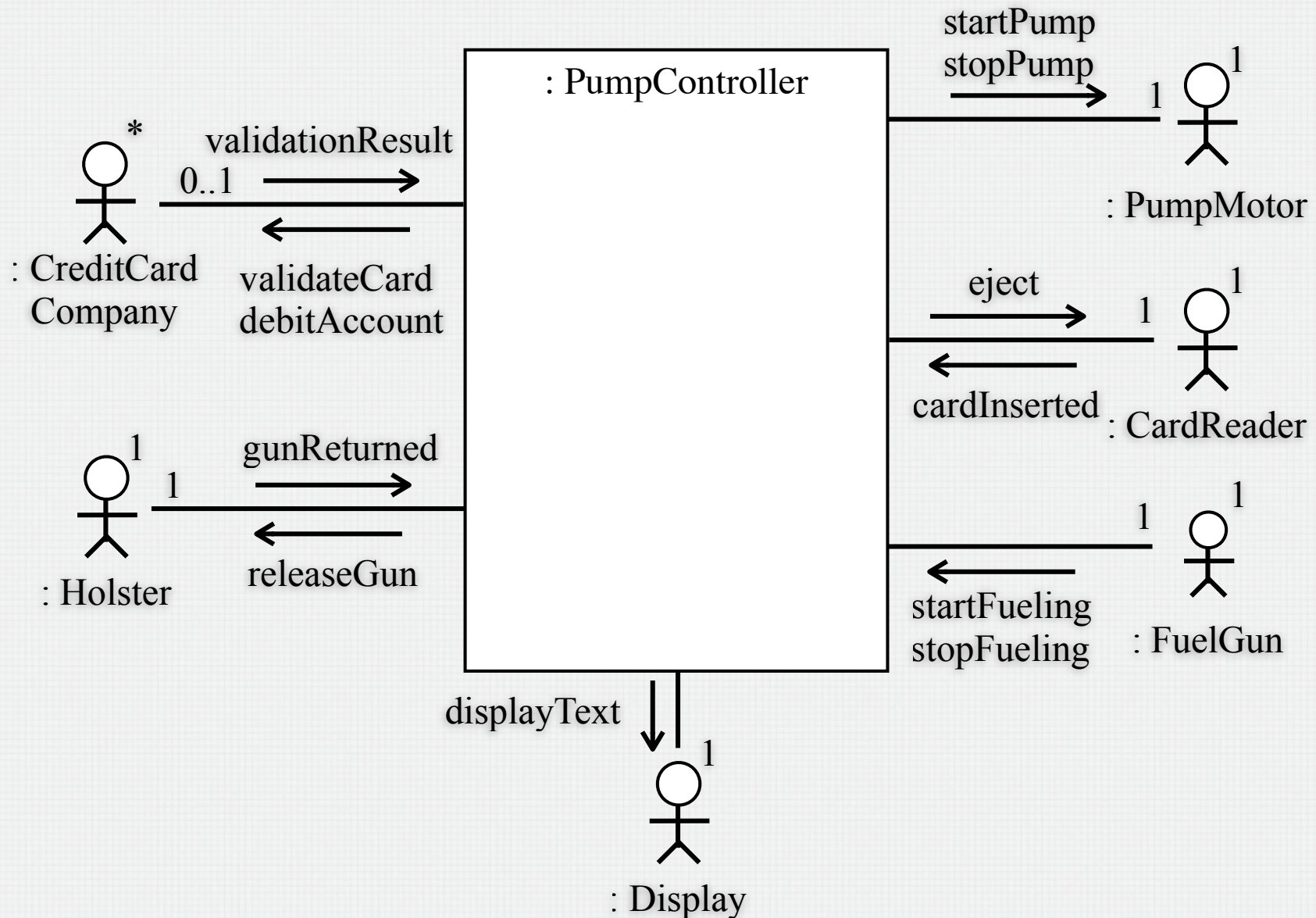
Stopped (diagnostic: Problem)

- **Output Messages**

Print (line: String)

Ack (response: Directive)

GAS STATION ENVIRONMENT MODEL ANSWER



GAS STATION MESSAGES ANSWER

- **Input Messages**

- CardInserted(cardNumber: Integer)
- ValidationResult(cardNumber: Integer, valid: boolean, limit: Integer)
- GunReturned()
- StartFueling() -- The user arms the gun handle
- FuelTakenSoFar(amount: Integer) -- the gun has a throughput measurement device
- StopFueling() -- The user releases the gun handle, or the tank is full

- **Output Messages**

- EjectCard()
- ReleaseGun()
- StartPump()
- StopPump()
- DebitAccount(cardNumber: Integer, amount: Integer)
- ValidateCard (cardNumber: Integer)
- DisplayText(text: String)

AUCTION SYSTEM ENVIRONMENT ANSWER

